

## Nexus 120 Sounder Strobe Beacon (AC)

The Nexus 120 is a very high output sounder beacon designed for industrial applications.

Connections are made to the base during the initial wiring phase which results in faster and more reliable installation. In addition, the head is fixed by quarter turn fasteners enabling faster installation and accurate seal compression for weatherproofing. IP66 as standard means that Nexus can be installed in almost any location.

The combination of powerful sounder and high output LED beacon ensures a very effective audio-visual signal.

105dB and 110dB units, as well as DC variants, are also available.

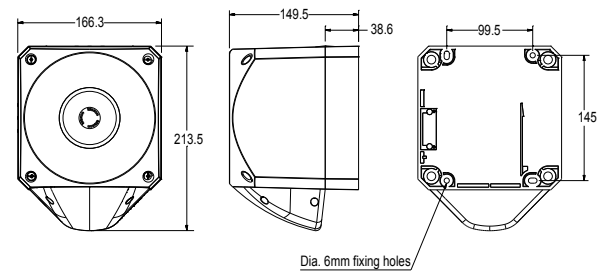
### Features

- High sound output 120dB (A)
- High efficiency Strobe LED beacon
- Three alarm stages
- Quarter turn fasteners for ease of installation
- First-fix, wire to base technology
- IP66 rated
- Volume control for greater flexibility - 20dB
- 64 tones
- Separate connections for sounder & beacon

### Lens Colour Options



**Applications** - Conveyors, Process control alarm, Cranes, Moving machinery, Safety signalling



## Specifications

Part No.	Lens Colour	Beacon Type	Audibility at 1m	Tones	Voltage	Sounder Current	Beacon Current
PNC-0009	Red lens	LED Beacon	Up to 120dB (A)	64	110/230V AC	200mA	55mA
PNC-0011	Amber lens	LED Beacon	Up to 120dB (A)	64	110/230V AC	200mA	55mA
PNC-0023	Clear lens	LED Beacon	Up to 120dB (A)	64	110/230V AC	200mA	55mA
PNC-0058	Blue lens	LED Beacon	Up to 120dB (A)	64	110/230V AC	200mA	55mA
PNC-0056	Green lens	LED Beacon	Up to 120dB (A)	64	110/230V AC	200mA	55mA

IP Rating: IP66    Operating Temp: -25°C to + 65°C    Cable Entries: 5    Weight: 2kg

# klaxon